

YMCA SUMMER DAY **CAMP**

FIELD GUIDE 2025

Registration Opens Online:
Monday, March 17th, 2025
8:00am



Welcome to Camp!

Meeting new friends, learning new skills, and enjoying fun-filled days in a caring, supervised environment is what YMCA Day Camps is all about! We are committed to giving your child the support, care and fun that they deserve.



Registration link:

ymcahbb.campbrainregistration.com



Website:

YMCAHBBDayCamps.ca



Email:

ymcadaycamps@ymcahbb.ca

YMCA Core Values

The YMCA is committed to helping children grow by teaching and reinforcing:

CARING
HONESTY
INCLUSION
RESPECT
RESPONSIBILITY

YMCA Healthy Child Development

The YMCA believes in every child's potential to shine. Day Camp Staff are trained in YMCA Canada's nationally recognized YMCA Healthy Child Development curriculum.

The principles of the Healthy Child Development focus on the "Y Way of Working with Children" including the impact of YMCA core values, creating developmentally appropriate programs and activities, and the importance of relationship building.

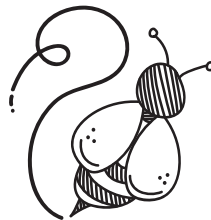
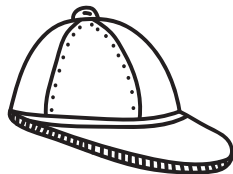
Healthy Child Development is a cornerstone of the YMCA Day program, and helps campers and staff feel included, build developmental assets, and feel supported to reach their full potential.

“My daughter absolutely enjoyed going to camp. She had nothing but great things to say about her day, the camp counselors, and the new friends she made. Each day, she would sing the new songs she learned and excitedly tell me about her day. Thank you to all the staff members for making her first year at camp a very memorable summer.”

Parent

Table of Contents

- 4** Note to Families
- 5** Planning Your Summer - Selecting the Right Camp
- 6** Camp Locations and Sessions
- 7** Camp Chippewa – Christie Lake Conservation Area
- 9** Specialty Camps – Christie Lake Conservation Area
- 10** Community Camps
- 12** Helping Hands – Inclusion Support Program
- 13** Leadership Development Program
- 14** Extended Care Options
- 16** Bus Information and Bus Routes
- 18** Behaviour Guidance Procedures
- 19** How to Register – Payment Methods & Financial Assistance



Dear Families...

Welcome to YMCA Day Camps!

We're all looking forward to another incredible summer! At YMCA Day Camps, kids grow in confidence as they explore, learn, and have fun. Our staff are passionate about their roles, valuing every camper and inspiring them to embrace the joys of camp and the fun in life. We believe they are some of the best role models a child could have.

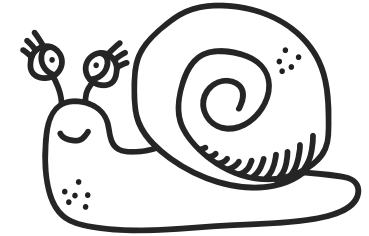
Every camper should feel a sense of belonging at camp—a place where they can proudly be themselves. Whether this is your first year as a YMCA camp family or you've been with us year after year, all campers are warmly welcomed into the YMCA camp community. At camp, children have the opportunity to play, meet new friends, explore new interests, shine on, and ignite the spark that makes them unique.

At YMCA Day Camps, our staff and campers model the YMCA values of caring, honesty, respect, and inclusion. Camp is for every camper, and we are dedicated to creating a welcoming space for all.

If you have any questions about our programs or are wondering if YMCA Day Camps are the right fit for your child, please don't hesitate to reach out to us.

See you at camp!

AJ Phillips,
Manager, YMCA Day Camps



YMCA Staff Team

Our counsellors are university, college and high school students who are trained to ensure your child's experience is one that will be cherished and remembered for many years. Many staff members are former YMCA Day Campers! In addition to refining their leadership and program skills, these individuals also concentrate on developing and preparing the summer day camp programs.

Many counsellors and support staff have been with us for several years. These individuals make a wonderful camping experience possible by providing a safe and welcoming environment in which your child will learn, play and have fun. All camp staff are certified in Standard First Aid and CPR-C and are trained to administer EpiPens. Staff have received dedicated training in programming, emergency procedures, YMCA behaviour management strategies and YMCA Canada's Healthy Child Development Curriculum.

The YMCA of Hamilton Burlington Brantford is committed to creating an inclusive, diverse, equitable and accessible environment.

We welcome staff from all communities including, but not limited to, Indigenous, 2SLGBTQIA+, BIPOC, and Disabled communities.

Planning Your Summer – Selecting the Right Camp

All YMCA Day Camps include some outdoor play, and campers participate in a wide variety of active games, quiet games, and traditional camp activities. Selecting the camp that interests your child is essential to ensuring an enjoyable experience at YMCA Day Camps.

The YMCA offers two types of camps:

- **Community Camps**
- **Outdoor Day Camps** (Christie Lake Conservation Area)

Community Camp programming is offered indoors and outdoors. Outdoor Camp is offered entirely outdoors.

Swimming

Outdoor camps at Christie Lake Conservation Area swim at a YMCA lifeguard-supervised waterfront. Community Camps swim at local YMCAs and community pools.

Christie Lake Conservation Area

Christie Lake Conservation Area is an outdoor camp with covered pavilions available. During inclement weather, children will participate in low-activity games under the pavilions. There is no indoor option at Christie Lake Conservation Area. Please send warmer clothes for these days. Use of Christie Lake Conservation Area's beachfront is dependent on clear water tests from the Ministry of Health. Christie Lake Conservation Area is a fully outdoor environment and campers spend time in forested areas. Please send your child with appropriate clothing or bug spray to avoid mosquito bites. Refunds will not be given for inclement weather, matters of environmental surroundings, or waterfront closure.



Camp Hours and Session Length

All our camps run from **9am to 4pm**, Monday to Friday. Each session is one week in length. If you need care outside these hours, **Extended Care** is available at select locations. Please visit our [Extended Care](#) page on page 14).

Age Requirement

To ensure developmentally appropriate activities and programming, children must meet the age requirement before the camp session begins.





Camp Locations and Sessions

Hours of Operation

All Day Camps:

Monday - Friday 9:00am - 4:00pm

If your child is taking a bus to Camp Chippewa, please see the bussing schedules (page 16 & 17) for drop-off and pick-up times.

Sign-in does not start until 9:00am at Community Camps.

Need a longer camp day? Extended care is available at select locations for an additional fee (see page 14 for details)

PLEASE NOTE: All day camp and extended care locations will be closed on Statutory Holidays:

Tuesday, July 1, 2025

Monday, August 4, 2025

Christie Lake Conservation Area:

1000 Hwy 5, Dundas

Campers are bussed to Christie Lake from Hamilton, Burlington, and Brantford at no extra charge or can be dropped off at 9:00 am at Christie Lake and picked up at 4:00 pm at the YMCA Camp Office at the Lakeside Pavilion at Christie Lake Conservation Area.

Burlington Community Camp:*

Tansley Woods Community Centre - 1996 Itabashi Way

Brantford Community Camp:*

Laurier Brantford YMCA - 100 Water Street

Hamilton Community Camp:*

Queen Victoria Public School - 166 Forest Avenue

*Community Camps do not offer bussing. All campers must be dropped off and picked up from their chosen camp location.

PLEASE NOTE: Locations are subject to change on availability.

Subsidies are available to support access to camp for children. Please see page 21 for more information.

SESSIONS	JUNE/JULY				
Session 1**	Jun 30	1	2	3	4
Session 2	7	8	9	10	11
Session 3	14	15	16	17	18
Session 4	21	22	23	24	25
Session 5	28	29	30	31	Aug 1
SESSIONS	AUGUST				
Session 6**	4	5	6	7	8
Session 7	11	12	13	14	15
Session 8	18	19	20	21	22

**Indicates a 4 day week due to holidays.

Camp Chippewa – Christie Lake Conservation Area

Campers will be organized into developmentally appropriate age sections as follows:

**NEW
2025**

- **Juniors Section:** Ages 6–7 years
- **Intermediates Section:** Ages 8–9 years
- **Seniors Section:** Ages 10–13 years

Our traditional camp activities will be thoughtfully tailored to suit each developmental age group, ensuring that every camper enjoys a fun and engaging experience.

- **Session 1, 6 (short weeks): \$220**
- **Session 2-5, 7-8: \$275**

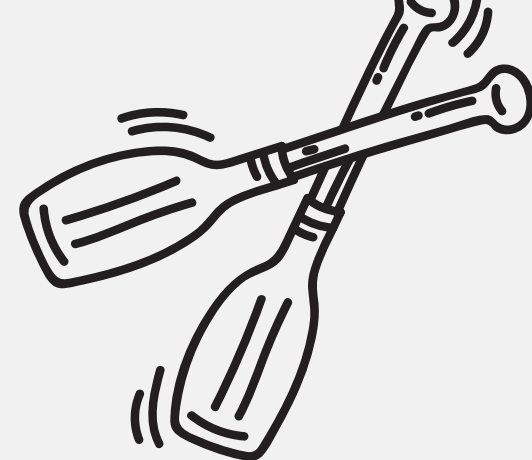
Transportation
Included

Juniors Section: Ages 6–7 years

Get ready for a week full of exploration, creativity, and fun tailored specifically for our youngest adventurers! This section is designed to introduce 6–7-year-olds to the wonders of nature and teamwork through engaging, age-appropriate activities. Campers will participate in guided hikes, creative activities, team games, and beginner skills in archery and canoeing, with a strong focus on safety and fun.

Intermediates Section: Ages 8–9 years

Get ready to expand your outdoor skills and embrace exciting new challenges. This section is designed for campers to level up their outdoor skills. Campers will participate in a wide variety of activities designed to deepen their love for the outdoors and build confidence in their abilities.



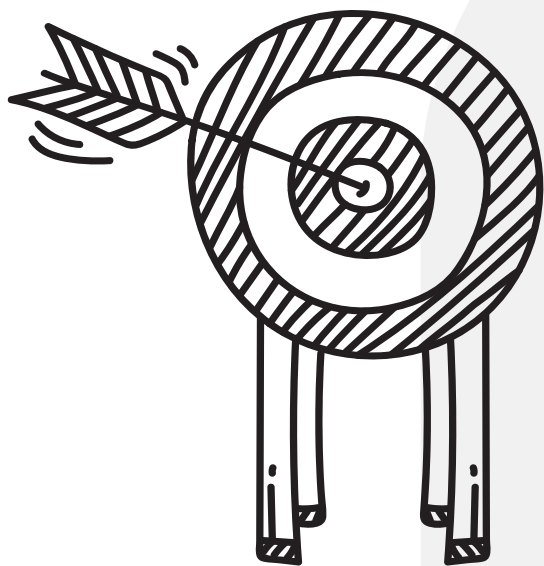
Seniors Section: Ages 10–13 years

This section offers exciting opportunities for campers to develop leadership skills, foster independence, and tackle outdoor challenges. Campers will explore longer and more challenging trails throughout Christie Lake Conservation Area and learn navigation basics. They will have the opportunity to further develop their archery knowledge, focus on precision and technique, explore Christie Lake by canoe, and practice teamwork and paddle skills.



Camp Chippewa – Christie Lake Conservation Area

ACTIVITIES



Swimming

Safe and fun water games will be provided for all who attend camp. All campers in the Junior section (campers ages 6-7 years old) must wear a lifejacket. Everyone will be tested to determine swimming capabilities before doing any water-based activities. Campers must pass a swim test to enter the deeper area.



Field Games/Initiatives

These activities blend traditional and wacky games using a team approach.



Hiking

Throughout the week, children will have opportunities as a group to explore hiking trails and boardwalks through the southern Ontario Wetlands, which are some of the most biologically diverse ecosystems in the world.



Arts and Crafts

Campers will have the opportunity to work individually and in groups, using many different mediums to explore their creative and artistic side. Take-home crafts include friendship bracelets and working with natural and foraged materials.



Archery and Sports

Campers will learn the proper use of a bow and arrow. Each participant will be assisted by staff and taught the parts, proper use of the equipment, and the safety procedures. Campers must adhere to all safety regulations in order to participate in this program.



Canoeing

During the week, campers will have the opportunity to go canoeing (weather permitting) and learn the basics of paddling and canoe safety. While canoeing, all participants must wear a life jacket and adhere to all safety regulations.

Specialty Camps – Christie Lake Conservation Area

Transportation
Included

Bussing: Routes available from Hamilton, Burlington, and Brantford. See page 16.

YMCA Specialty Camps learn about the environment around them, and participate in a wide variety of activities focusing on nature education, science, and wilderness exploration. A fundamental attribute of Specialty Camps is the opportunity for campers to participate in Camper's Choice Block. The Camper's Choice Block takes place on Wednesday mornings, and campers can choose from five activity blocks including:

- Paddle Sports (Canoe/Kayak)
- Swimming
- Sports and Archery
- Shore to Shore Hike
- Creative Crafts

Each Camper's Choice Block has a limited amount of space. Campers will choose their top three activity preferences and every effort will be made to give a camper their first choice.



Eco-Explorers

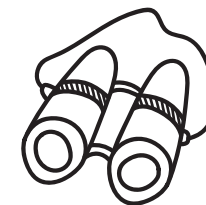
Ages: 8 – 13 Campers will be grouped by age.

Staff to Camper Ratio: 1:10

Sessions: 1 – 8

Fees: Sessions 1, 6 (short weeks)	\$240
Sessions 2 - 5, 7 - 8	\$300

Campers will learn about their environment and the world around them through exciting activities and wilderness games. Activities will focus on nature education, science, leave no trace principles, and a variety of different wilderness survival techniques. Themed activities will include air, water, animal tracks, ecosystems, and more! Eco-Explorers campers will enjoy a full camp program including archery, arts and crafts, and canoeing!



Paddle Skills

Ages: 8 – 13 Campers will be grouped by age.

Staff to Camper Ratio: 1:10

Sessions: 1 – 8

Fees: Sessions 1, 6 (short weeks)	\$248
Sessions 2 - 5, 7 - 8	\$310

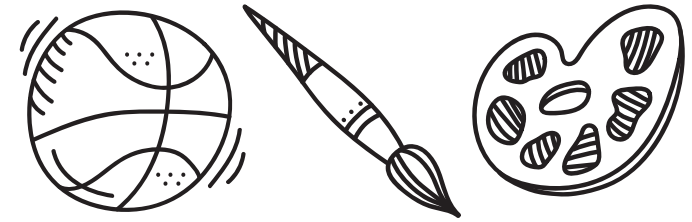
Perfect for new and experienced paddlers! Campers will learn the fundamentals of both canoeing and kayaking, including essential techniques like backpaddling, the draw stroke, the J stroke, proper paddle grip, and kayak control. The counsellors emphasize safety and skill development while making the experience fun and engaging.

In addition to time on the water, campers will enjoy traditional camp activities like swimming, arts and crafts, and archery. Life jackets are mandatory for all water activities to ensure safety. At the end of the week, campers will receive a skill assessment to celebrate their progress.

PLEASE NOTE: Campers will spend time in boats every day. If unforeseen weather conditions arise, makeup sessions will be scheduled as weather permits.

Heads up, campers! To make sure you get the most out of our specialty activities and boating, you'll be swimming three times a week. Plus, you'll have opportunity swim during Camper's Choice Blocks on Wednesday mornings.





Hamilton – Queen Victoria Public School (166 Forest Ave)

Ages: 6-12 Campers will be grouped by age.

Staff to Camper Ratio: 1:10

Sessions: 1 – 7 (Session 8 is unavailable at this location)

Fees: Sessions 1, 6 (short weeks)	\$216
Sessions 2 - 5, 7	\$270

Burlington – Tansley Woods Community Centre (1996 Itabashi Way)

Ages: 6-12 Campers will be grouped by age.

Staff to Camper Ratio: 1:10

Sessions: 1 – 8

Fees: Sessions 1, 6 (short weeks)	\$234
Sessions 2 - 5, 7 - 8	\$292



Brantford – Laurier Brantford YMCA (100 Water St)

Ages: 6-12 Campers will be grouped by age.

Staff to Camper Ratio: 1:10

Sessions: 1 – 8

Fees: Sessions 1, 6 (short weeks)	\$227
Sessions 2 - 5, 7 - 8	\$281

PLEASE NOTE: Campers at Laurier Brantford will be bussed to Brant Park twice a week for outdoor play. Campers at the Laurier Brantford YMCA swim every day.

Community Camps

This summer, campers aged 6–12 can choose from three exciting streams: **Art Spark**, **KidVenture**, and **Active Kids**. Each day includes four activity blocks, with two focused on the camper's chosen stream and the rest dedicated to traditional day camp favorites like active games, sports, arts and crafts, swimming, and outdoor play. Campers will be divided into developmentally appropriate camper groups.



Art Spark

Unleash your creativity this summer with Art Spark! Our camp offers an exciting mix of artistic activities, including painting, sculpting, making friendship bracelets, and much more. Campers will collaborate on a unique art project each week, culminating in a special Art Gallery presentation every Friday to showcase their creations. Whether you're a budding artist or just looking for a fun way to express yourself, Art Spark is the perfect place to explore your imagination and make lasting memories!

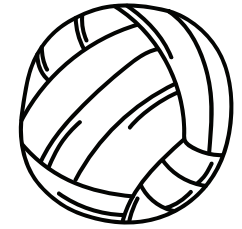
Sample Activities:

- | | |
|---|--|
| <ul style="list-style-type: none"> • Air Dry Clay Projects • Collage Making • DIY Friendship Bracelets | <ul style="list-style-type: none"> • Nature Collage • Rock Painting • Watercolour Art |
|---|--|

**NEW
2025**



Community Camps



KidVenture

NEW
2025

Celebrate Discovery with KidVenture! Dive into a world of curiosity and creativity where science experiments, games, and weekly guest speakers bring learning to life. Campers will tackle exciting challenges, collaborate on innovative projects, and explore new ideas through hands-on activities. Packed with fun and discovery, KidVenture is the perfect place for young explorers to ignite their passion for science and teamwork!

Sample Activities:

- Catapult Creation
- DIY Terrarium
- Egg Drop Challenge
- Oobleck Discovery
- Scavenger Hunts
- Tower Building



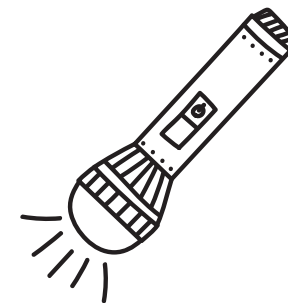
Active Kids

NEW
2025

Get ready to move, groove, and play at Active Kids! This dynamic camp combines a variety of sports and movement activities to keep campers energized and engaged. With a focus on building fundamental movement skills, teamwork, and sportsmanship, Active Kids is the perfect place for young campers to stay active, make friends, and have a blast!

Sample Activities:

- Basketball
- Cardio Circuits
- Dodgeball
- Gym Games like Octopus
- Soccer
- Yoga



Helping Hands Inclusion Support Program

As a camper attending one of our Day Camp programs, your child can receive 1:1 support from trained YMCA Helping Hands Counsellors. Helping Hands Counsellors are Day Camp Counsellors with previous experience working with children.

This support enables your child to be included in all aspects of regular camp programming. The YMCA Helping Hands staff are trained to attend to the unique needs of children with physical or developmental disabilities including personal care and safety—while facilitating friendships, skill development, independence and fun!

Fees: Sessions 1, 6 (short weeks) \$371
 Sessions 2 - 5, 7 - 8 \$464

Ages: 6 - 14

Location: Available at all Day Camp locations

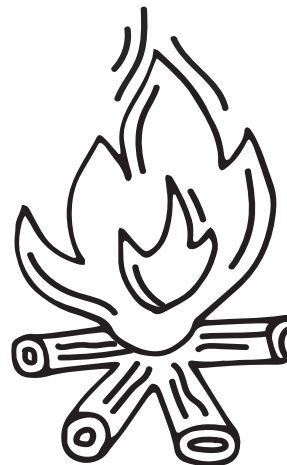
For more information about the Helping Hands program, please email helpinghands@ymcahbb.ca

How to Register

To provide the best fit and experience for campers, we ask parents to complete an application for the Helping Hands program when registration opens on Monday, March 17th at 8:00 am. This can be completed at ymcahbb.campbrainregistration.com

- This application does not guarantee you a spot in the Helping Hands program.
- Once your application has been submitted, a member of the Helping Hands team will reach out to confirm spaces available, and complete a more in-depth intake with you to learn how best to support your camper.
- Due to high demand, spaces are not guaranteed or confirmed until a member of the Helping Hands team has reached out to complete the intake process and confirm your registration in the program.
- We do not require any forms, or intakes to be completed before registration opens, and encourage families to complete their application as soon as possible given the demand for the program.
- Children must meet the age criteria for the selected camp but after that, the choice is up to you and your child.
- Registration is limited to two weeks per camper to give Day Camp opportunities to more children. Additional weeks may become available throughout the summer.

Leadership Development Programs



Leader In Training – Level 1

Location: Christie Lake Conservation Area. Bussing is provided

Sessions: 1 – 2, 5 – 6 *must attend a full two-week session

Prerequisite: Campers aged 14-15 years old (campers who are turning 14 in 2025 are accepted)

Fees: \$290

The Leader In Training program (Level 1) is an engaging program designed for participants to acquire camp related skills (canoeing, archery and large group leadership) while learning how to work as part of a team. Participants will learn about the YMCA and its core values. Participants will participate in activities geared towards group management, activity planning and team building. Participants will complete volunteer hours supporting a camper group during the second week of the program.

Leader in Training – Level 2

Location: Christie Lake Conservation Area. Bussing is provided

Sessions: 3 – 4, 7 – 8 *must attend a full two-week session

Prerequisite: Campers aged 14-15 years old, campers who are turning 14 in 2025 are accepted. Completion of LIT Level 1.

Fees: \$290

The Leader In Training program (Level 2) enhances the learnings of Level 1. While canoeing, swimming and playing games, participants will also learn the following skills through fun, creative sessions and hands-on experience. Participants will build on their skills and complete a placement within a specialized camper group in the second week of the program to develop their group management and leadership skills.

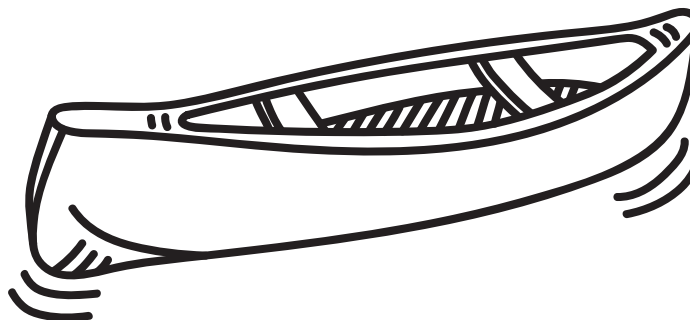
All LIT campers will be guided through these sessions by our trained staff. A certificate outlining the LIT camper's achievement will be awarded to each participant.

Staff to camper ratio is 1:15.

All participants will receive an emailed verification letter of up to 32.5 volunteer hours in September 2025 depending on attendance and participation.



Extended Care Options



Extended Care (ages 6-12)

Extended care is offered before and after camp at an additional fee. This safe, fun and supervised licensed child care environment is available at several locations.

- \$30/week; \$24/week (Weeks 1 & 6) - Burlington, Hamilton, Stoney Creek, Brantford
- Operates from 7:00 - 9:00am and 4:00 - 6:00pm
- Space in the extended care program is limited. Please register early to avoid disappointment.

Extended Care Location	Camps Served	Sessions
BURLINGTON		
St. Timothy Catholic Elementary School - 2141 Deer Run Ave	Camp Chippewa	1 - 8*
Tansley Woods Community Centre - 1996 Itabashi Way	Tansley Woods Community Camp	1 - 8
HAMILTON STONEY CREEK		
Chedoke Elementary School - 500 Bendamere Ave	Camp Chippewa	1 - 8
Stoney Creek YMCA Child Care Centre - 105 King Street East	Camp Chippewa	1 - 8
Queen Victoria School - 166 Forest Avenue	Camp Chippewa Queen Victoria Community Camp	1 - 8* 1 - 7*
BRANTFORD		
Laurier Brantford YMCA	Camp Chippewa Laurier Brantford Community Camp	1 - 8 1 - 8

Extended care locations and times are subject to change based on availability.

Note 1: If you wish to enroll in extended care and attend Art Spark, Active Kids or Kidventure, the Community Camp location and extended care location must be the same.

Note 2: Please note there will be no extended care offered on Monday, June 30th at St. Timothy Catholic Elementary School.

Note 3: Queen Victoria School extended care will be open sessions 1-7 for Art Spark, Active Kids or Kidventure, sessions 1-8* for Camp Chippewa.

Note 4: NEW for 2025: Tansley Woods Community Centre does not have Extended Care for Camp Chippewa campers.



Bus Information and Bus Routes – Available for Christie Lake Conservation Area

Preparing for the Bus Trip

- On the first day of camp, your child will be given a wristband colour corresponding to their bus– please leave this bracelet on for the remainder of camp as it will be used to identify your child at camp.
- All busses have at least one staff person (bus monitor) who rides the bus from beginning to end. **All children under the age of 16 must be signed out by an adult (over the age of 16).**

PLEASE NOTE: Anyone signing a camper out must be on the Authorized Pick Up list and provide government issued photo ID at the time of pick up.

Bus Delays

- While we make every effort to adhere to the bus schedule, we place an emphasis on safety and ask parents to arrive 5-10 minutes before the scheduled time.
- Day Camp Senior Staff are in contact with the busses and track their progress to ensure safety for both campers and staff. Once underway, our schedules account for typical traffic, but buses may fall behind in case of major congestion on bus routes. The Day Camp Office will send an text blast to notify parents if there is more than a 15-minute delay from the scheduled arrival time.

Choosing a Bus Route

- The bus you choose to transport your child must be the same for drop off and pick up for the entire week. If your child requires more than one bus option throughout the summer, please contact the Day Camp Office at ymcadaycamps@ymcahbb.ca to ensure these changes can be reflected on your account.
- For extended care families, pick up and drop off must be completed at the extended care site.

Late Pick Ups

- Busses will wait for 5 minutes for children to be signed out before moving on to the next stop. Adults who arrive after the bus has departed must then pick up their child at their local YMCA. Parents will be charged a late fee if their child is not picked up by the end of the route.
 - Hamilton Busses (Lower City) - Downtown YMCA
 - Hamilton Busses (Mountain) - Les Chater YMCA
 - Burlington Busses - Ron Edwards YMCA
 - Brantford Busses - Laurier Brantford YMCA

Bus Information and Bus Routes

Hamilton Busses (Lower City)

LOCATION	Depart at (AM)	Drops off at (PM)	Extended Care Site
DOWNTOWN HAMILTON - ORANGE OWLS			
Queen Victoria Elementary School, 166 Forest Avenue N	8:25	4:30	X
EAST END HAMILTON - PURPLE PENGUINS			
Norman Pinky Lewis Recreation Centre, 192 Wentworth St. N	8:05	5:00	
Sir Winston Churchill Secondary School, 1715 Main St E	8:20	4:45	
WESTDALE AND DUNDAS - RED RHINOS			
Dalewood Middle School, 1150 Main St. West	8:15	4:45	
Sir William Osler Elementary School, 330 Governors Road	8:30	4:25	
STONEY CREEK - BLACK BADGERS			
Stoney Creek Day Care, 105 King St. East, Stoney Creek	8:25	4:35	X

Hamilton Mountain Busses

LOCATION	Depart at (AM)	Drops off at (PM)	Extended Care Site
WEST MOUNTAIN - PINK PARROTS			
Corpus Christi Elementary School, 25 Alderson Drive	8:15	4:55	
Chedoke Elementary School, 500 Bendamere Ave	8:30	4:35	X
CENTRAL HAMILTON MOUNTAIN - GREEN GORILLAS			
École élémentaire Pavillon de la jeunesse, 105 High St.	8:05	4:50	
Spring Valley Elementary School, 99 Dunham Dr.	8:40	4:20	
SOUTH HAMILTON MOUNTAIN - GOLDEN GOOSE			
Les Chater YMCA, 356 Rymal Rd East	8:15	4:45	

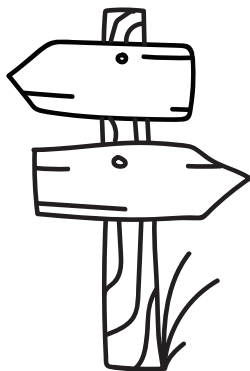
Bus Information and Bus Routes

Burlington Busses

LOCATION	Depart at (AM)	Drops off at (PM)	Extended Care Site
BURLINGTON NORTH - BLUE BIRDS			
Frontenac Public School, 5140 Pinedale Ave	8:10	4:50	
Ron Edwards YMCA 500 Drury Lane	8:20	4:35	
BURLINGTON SOUTH - TURQUOISE TURTLES			
Tansley Woods Community Centre, 1996 Itabashi Way	8:25	4:40	
BURLINGTON AND WATERDOWN - YELLOW YAKS			
St. Timothy Catholic Elementary School, 2141 Deer Run Ave	8:15	4:50	X
Allan A Greenleaf, 211 Parkside Drive, Waterdown	8:45	4:25	

Brantford Busses

LOCATION	Depart at (AM)	Drops off at (PM)	Extended Care Site
BRANTFORD - SILVER SHARKS			
Assumption College, 257 Shellard Lane (Front doors of staff parking lot)	8:05	5:10	
Laurier Brantford YMCA, 100 Water St. (doors located on Water St.)	8:20	4:55	X
Three Bears Preschool, 160 Brantwood Park Rd, Brantford	8:35	4:30	



Behaviour Guidance Procedures

It's our goal to provide a healthy, safe and secure environment. The YMCA teaches core values through activities based on caring, honesty, inclusion, respect and responsibility. Children who attend programs are expected to follow the behaviour guidelines and interact appropriately within the group. Admission into and discharge from day camp will be at the discretion of the YMCA. On occasion, despite our Day Camp staff's efforts, there may be a situation where our program cannot reasonably meet the unique needs of a child.

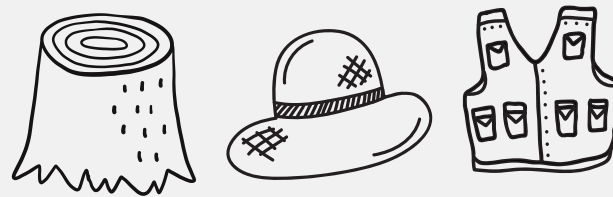
The following guidelines are put in place to ensure all campers enjoy their camp experience. Failure to follow these guidelines may result in suspension or removal from Day Camps.

- People are responsible for their actions
- We respect each other and the environment
- Honesty will be the basis for all relationships and interactions
- We strive to make healthy and safe choices
- We will care for ourselves and those around us
- We value diversity and seek to include others



All children are expected to follow the YMCA behaviour guidelines, and to interact in a positive and appropriate manner with their fellow peers, staff, and other members of the YMCA Camp community. Behaviour (including but not limited to: violence, swearing, harassment; verbal threats; physical behaviour; running away; destructive behaviour etc.) that negatively impacts others physically or emotionally may result in dismissal or permanent removal from camp at the discretion of the YMCA of Hamilton|Burlington| Brantford.

If you are currently experiencing a break in service from a YMCA program, it may affect your ability to register for other YMCA services. Please contact the Day Camp office for more information.



Payment Schedule

Payments can be made:

- In full at time of registration
- In full post-dated on May 15th
- Post-dated and split between May 15th and June 15th

PLEASE NOTE: If you are in receipt of subsidy and registering online, you will need to post-date your payment to May 15th and June 15th to allow administration time to change your payment to reflect your contract. Families are responsible for indicating their receipt of subsidy at the time of registration, or risk being charged the full fee. Families must contact their subsidy worker to confirm summer camp subsidy. The YMCA highly encourages families to reach out as soon as possible to avoid processing delays.

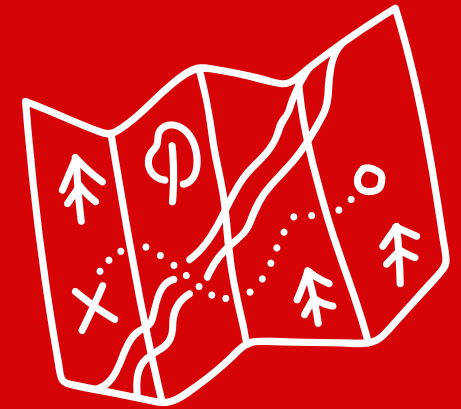
Once the Post-Dated deadline has passed, payment is due at time of registration.

Pay online via VISA Credit, MasterCard Credit, or EFT (Direct Deposit information required for EFT includes: Transit Number, Institution Number and Account Number)

PLEASE NOTE: We do not accept VISA Debit or American Express. If you use a Visa Debit card, the system will accept the card, but will not process the payment. Parents will be responsible for making their missed payment within 3 business days and will be charged a \$10 service fee per failed transaction. Visa Debit users are **required** to use the EFT option, using Transit/Institution/Account number details.

Families can log in to their CampBrain accounts for access to receipts for tax purposes. If you need help accessing your account, please contact the day camp office.

We would be happy to answer any questions you may have about your child's Day Camp registration. Please contact us at 905-317-4929 or email ymcadaycamps@ymcahbb.ca

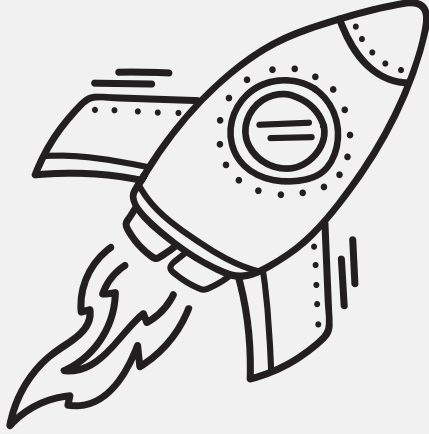


How to Register – Payment Methods & Financial Assistance

Online Registration

ymcahbb.campbrainregistration.com

Registration instructions for families in receipt of subsidy can be found at ymcahbbdaycamps.ca



Registration Reminders

- **Payment details must accompany completed registration.**
- **Full or post-dated payments must be made on-line by Visa Credit, MasterCard, or EFT at time of registration.**
- Payments that are returned as NSF will be re-processed by the YMCA within 3 business days. A **\$10 service charge** will be applied to all returned payments. We cannot guarantee your camper's spot if payments are declined or outstanding as of **June 15, 2025**.
- Registrations will not be accepted after **Monday at 12:00 pm** for attendance the following week.
- Families that indicate their child requires medication or an EpiPen at camp must ensure all forms are complete prior to the camp session. **Campers will not be able to attend until forms are complete.**
- Completed registrations will receive an email confirmation regarding the status of your campers enrollment.



Changes, Cancellations and Refunds

- One complimentary change will be permitted to families. Additional changes will result in a \$30 change fee. Changes include switching camp sessions, camp location or camp programs.
- Cancellations and changes to camp preferences must be made no less than 10 business days before the registered camp week.
- All changes or cancellations must be made in writing and emailed to **ymcadaycamps@ymcahbb.ca**.
- All cancellations must be emailed, and any other method of cancellation, including voicemails and phone calls, will not be considered.
- Any refunds requested after **May 14th, 2025** will be subject to a **\$30 administration fee** per camper registration.
- **Refund Policy:** Camp is non-refundable within 10 business days. Refunds within 10 business days must accompany a medical note which will be decided case by case by the Day Camp Manager. All refund requests must be submitted in writing to **ymcadaycamps@ymcahbb.ca**.
- Refunds are not issued for inclement weather or pool/ beach front closures or matters of environmental surroundings, including bug bites.

Financial Assistance Child Care Subsidy

Child Care Subsidy is available to families that qualify through the City of Hamilton, Brantford or Regional Municipality of Halton.

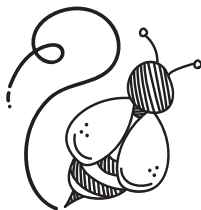
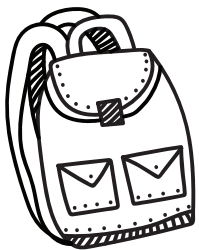
Registration limits for our Specialty Camps at Chippewa Christie Lake based on region.

- Hamilton - No limit
- Burlington - No limit
- Brantford - Cannot register for Specialty camps

There are no registration limits for General Camp Chippewa or Community Camps.

Please direct inquiries to:

- City of Hamilton - 905-546-4870
- City of Brantford Child Care Services - 519-756-3150
- Regional Municipality of Halton - 905-825-6000



YMCA Financial Assistance

Through the generosity of donors from across our community, the YMCA can assist with the payment of two weeks of YMCA Day Camp fees. If your financial circumstances are limiting your ability to register for Day Camp programs, please contact the YMCA to arrange a Day Camp Assistance appointment. All inquiries will be confidential. All appointments will take place virtually and booked through an online booking portal.

- For families interested in Financial Assistance, email us at ymcadaycamps@ymcahbb.ca

How to prepare for your appointment:

- Complete your camper's online registration
- Post-date and split your payment between May 15, 2025 and June 15, 2025
- Bring supporting documentation (2024 Notice of Assessment, pay statements, government assistance statement, etc)

Charitable Mission

The YMCA of Hamilton|Burlington|Brantford is a charitable organization helping people achieve personal growth in spirit, mind and body.

Vision

Creating a vibrant and healthy community where everyone belongs and has the opportunity to reach their full potential.

Core Values

CARING, HONESTY, INCLUSION, RESPECT and RESPONSIBILITY.

ymcahbb.ca

Contact YMCA Day Camps:

905-317-4929

ymcadaycamps@ymcahbb.ca

As an accredited member of the Ontario Camps Association and registered member of High Five, we deliver convenient, affordable and quality programs where everyone is welcome.



Charitable Registration # 10808 3825 RR0001

